

Palo Alto Community Fund

...endowing our future

Summer 2003

A-Z of 2003 Grantees

In late May, the Palo Alto Community Fund announced its grantees for 2003—a veritable alphabet soup of local non-profits which sponsor a kaleidoscope of programs in our area. These grants totaled more than \$131,000, the largest amount yet to be distributed by the Fund. During these challenging economic times, our grantees tell us that they appreciate each and every dollar that we are able to supply!

PALO ALTO COMMUNITY FUND 2003 GRANTEES

Avenidas: Restoration of Senior Home Repair Subsidy Program for low-income seniors

Child Advocates of Santa Clara and San Mateo Counties: Recruitment and Training Program providing trained community volunteers for continuing follow-up for abused and neglected children in the county dependency systems

Community Association for Rehabilitation: Infant Development Program providing early intervention services to more than 140 infants and their families

Community School of Music & Arts: Financial aid for low-income students to develop artistic abilities

East Palo Alto Mural Art Project: Continuing support for mural project providing youth employment and training while enhancing schools and neighborhoods

East Palo Alto YMCA: Funding for 2003 Summer Day Camp

Foundation for a College Education: Providing academic coordinator for College Bound Program

Friends of Palo Alto Junior Museum & Zoo: Providing in-depth science enrichment to elementary students in East Palo Alto and East Menlo Park

Our New Executive Director

A consummate professional and community advocate, Cammie Vail took the baton in January as the new Executive Director of the Palo Alto Community Fund. Ms. Vail brings depth, breadth, a big heart, and commitment to this position. She has worked in the private sector and has served as a volunteer for community and local non-profit agencies over the past decade, including a term as President of the Junior League of San Francisco.

Over the past months, Cammie has been impressed with the quality and quantity of non-profits that serve the needs of our increasingly diverse mid-peninsula community. She sees an

(continued on back)

Girls Club of the Mid-Peninsula: Supporting Music Learning Program for at-risk girls by providing a music teacher, piano, and sheet music

InnVision/Urban Ministry of Palo Alto: Helping with funding emergency case manager to assist families losing housing

Music Teachers Association of California: Providing a music teacher for elementary students in East Palo Alto

Palo Alto Art Center Foundation: Cultural Kaleidoscope program partnering Palo Alto and Ravenswood elementary students in visual arts program

Palo Alto Family YMCA: Support for the Ventura Youth Activity Center

Planned Parenthood Golden Gate: Promotoras Program providing outreach services in Spanish at locations in East Palo Alto

Shelter Network: Enabling Haven Family House to continue in operation

St. Elizabeth Seton School: Support for the Spectra Art Program serving kindergarten through eighth-grade students

Support Network for Battered Women: Funding for counseling and treatment for victims of domestic violence

Youth and Family Assistance: Diversion Services Program providing juvenile delinquency prevention and early intervention services for East Palo Alto Youth ages 10-17

Zohar: IndependANCE programs for at-risk and special-education students

The Palo Alto Community Fund is proud to support these diverse institutions in their contributions to our community.

Volunteer Extraordinaire

PACF salutes Betty Ullman, who for the past four years has coordinated the Fund's database—the lifeline to our friends and donors. Aware of Betty's outstanding organization of the Atherton Library database and earlier experience as bookkeeper at Ritchey, Whitman, Fisher and Klein, Ellen Turbow persuaded Betty to take on our fledgling database. Ellen envisioned a paid position, but Betty saw an opportunity to volunteer her services. And so from that day forward, Betty has maintained and updated the database used for all our mailings and donations—in short, all the nitty gritty of our efforts.

In addition to the Community Fund, Betty has

(continued on back)

BOARD OF DIRECTORS

Charlene Aguilar
Edward Arnold
Annette Bialson
Barbara Carlitz
Terrence Conner
Betsy Gifford
Marty Hargrove
Carroll Harrington
Bill Johnson
Larry Klein
Tony Klein
Julie Lythcott-Haims
Beth Martin
Betsy Meehan
Eliane Neukermans
Margaret Raffin
Maddy Stein
Susan Sweeney
Anne Taylor
Ellen Turbow

President

Cathy Kroymann

Executive Director

Cammie Vail

BOARD OF ADVISORS

Laura Arrillaga
Betsy Bechtel
Henrietta Burroughs
Vicky Ching
Ken Coleman
Ann DeBusk
Andy Doty
Leonard Ely
John Erving
Kathy Espinoza-Howard
Luis Fraga
Julie Jerome
Liz Kniss
Jean McCown
Bill Reller
Charles Schulz
Tim Stanton
Megan Swezey Fogarty
Kathy Torgersen
Sam Webster

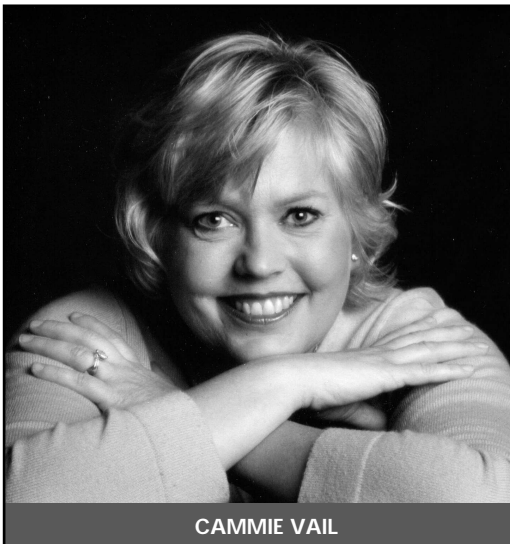
Chair

Marti deBenedetti

Our New Executive Director

(continued from front)

opportunity to help build relationships between non-profits with similar goals to maximize services to the Palo Alto community while enhancing programs in significant ways. Further, she hopes to assist us as we grow our donor base and increase contributions so that the Fund can increase its grantmaking to a greater number of worthy non-profits.



CAMMIE VAIL

One board member notes that Cammie has already made a significant and positive impact. Her work is flawless, her commitment to keeping the community healthy and strong is inspirational, and she brings out the best in everyone she meets. PACF is lucky and proud to have found this gem.

Cammie works Monday through Thursday from our desk at the Foundation Incubator on Embarcadero Road.

Volunteer Extraordinaire

(continued from front)

a strong resume in service to the Girl Scouts, United Way, Stanford Hospital, the Atherton Library... You get the picture! The Board of Directors has been ever grateful to Betty for managing our computer database and mining it for the information we have needed to grow the PACF into the vigorous community endowment fund it is today.



BETTY ULLMAN

Now, with the establishment of an office (at least, a cubicle) and a half-time Executive Director, it's finally time to consolidate all the Fund's activities under one roof.

Thank you, Betty, for being such a valued and reliable volunteer! The Fund appreciates your offer to continue to help when and where you are needed... You will be hearing from us!

CONTACT THE
PALO ALTO
COMMUNITY FUND

Phone 650.354.0993
Fax 650.354.1603

Email cammie@paloaltocommfund.org
Web www.paloaltocommfund.org

EIN 77-0483215